

The Art Büro

DESIGN GUIDE TO ART PLACEMENT

FROM START TO FINISH

A full DIY guide to
hanging artwork.

THE FENG SHUI BASICS

The five elements
in technicolor

CURATED SECTIONS

All the tips you need
to showcase your art
collection





The Art Büro is a boutique ART consulting agency in Barcelona, curating the perfect artwork for your home, office, public space or commercial project. We have a long-standing love affair with art and specialise in introducing our clients to the work of Spanish and Catalan artists. We're here to inspire you with the best of the modern art world, and give you the confidence to explore your own art journey.



Where to Start

WHAT YOU WILL FIND IN THIS GUIDE

The Art Büro have helped you to connect and fall in love with the perfect piece of art. It's safely delivered, the packaging comes off and you gasp with delight.. Now what?

Let us show you where to place your artwork based on key design principles (with a little Feng Shui thrown in), for perfect harmony at home.

CONTENTS

Back to Basics	03
Take Note	08
How to Actually Hang Art	09
Feng Shui Explained	10
Our Artsy Dream House	11
Dos and Donts	15

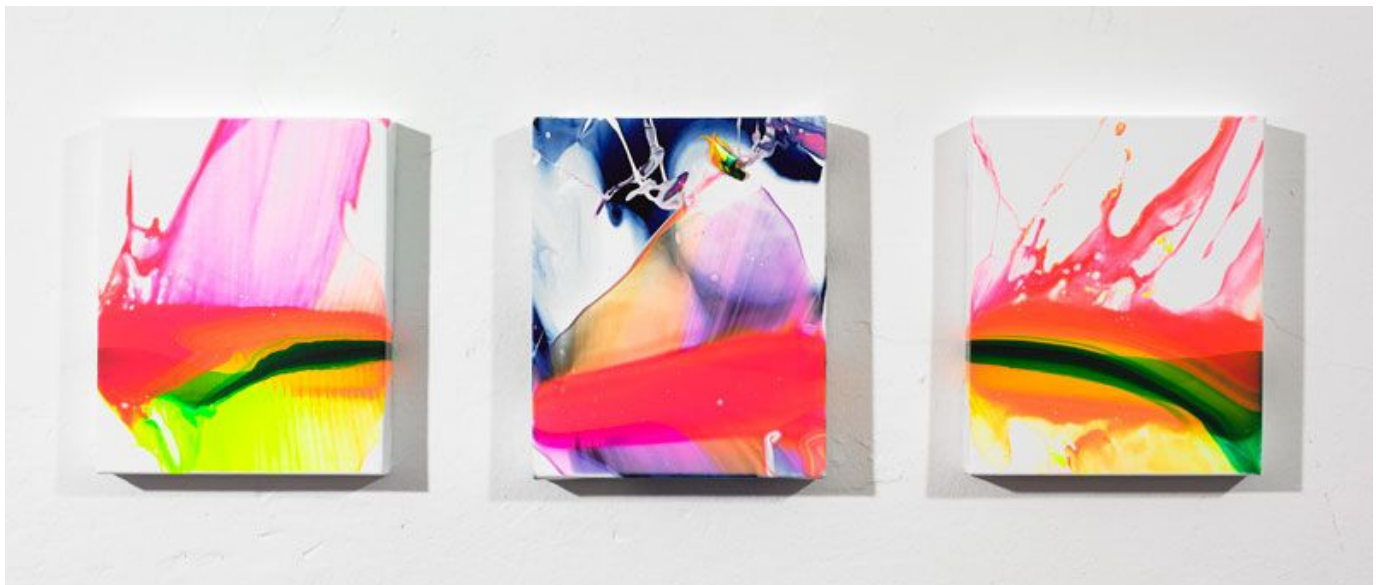
Back to Basics: Simple Placement Rules to Live By

SYMMETRICAL PIECES

For matching pieces that come together, like triptychs or diptychs intended to sit parallel, or art that is a similar size or style, group them symmetrically.

This looks especially good above large items of furniture or fireplaces.

For smaller walls, keep 2 1/2 to 5 cm distance between them, and normal to large walls, a 10 to 15 cm gap at most.



Back to Basics: Simple Placement Rules to Live By

GALLERY WALLS

A stunning way to group contrasting pieces that are unique but work well together. Gallery walls are really effective in spaces like hallways or stairwells.

For an odd number of pieces, arrange the heaviest and largest pieces to the bottom left (as our eye reads from left to right). For an even set, keep the heaviest item in the centre.

The best gallery walls happen over time, and mix contrasting mediums like wall sculptures, mirrors, photographs and prints. **Don't rush** - collect pieces that are meaningful in their own right and play with their layout as you go.



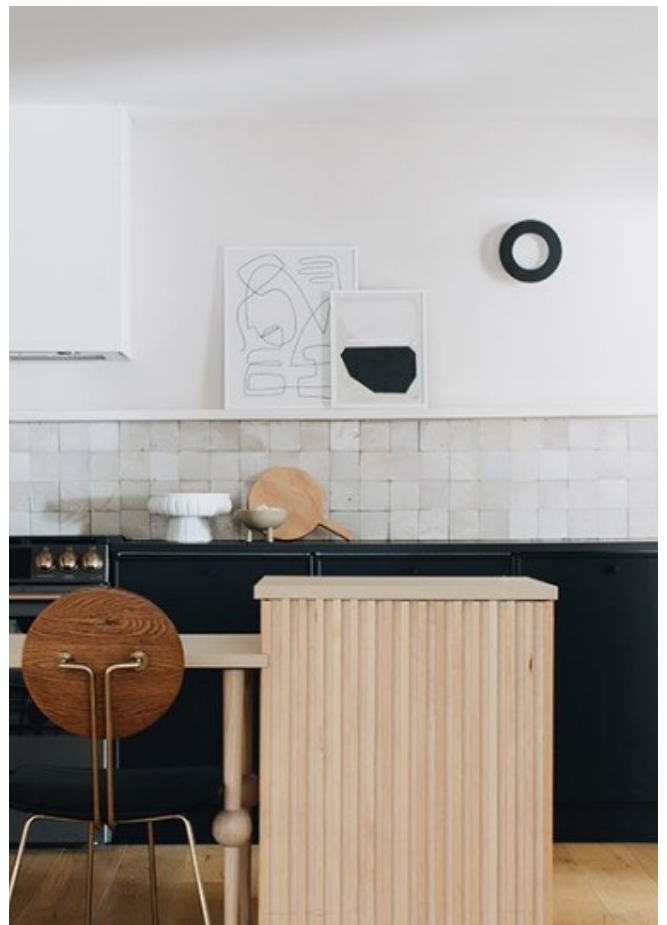
Back to Basics: Simple Placement Rules to Live By

LAYERING

For ultimate flexibility, you could layer different pieces of artwork across a mantelpiece or wall-mounted shelves.

This is ideal for renters who might not want to put holes in their walls! Or those who like to shake things up regularly and change the way their art is arranged (without the aforementioned holes in walls).

Art can also be leaned against a wall or on top of a piece of furniture.



Back to Basics: Simple Placement Rules to Live By

PAINTED WALLS

Of course art doesn't have to be hung or placed against a wall at all - a huge (and growing) interiors trend that we love to see is painting on a wall itself. Murals and frescoes are making a comeback and can be such an impactful element.

You might like to work directly with an artist to create an original piece or if you're feeling brave, anyone can try this themselves! Don't be afraid to test abstract shapes - which are almost impossible to mess up (but do draw your design on the wall in pencil first)!



Back to Basics: Simple Placement Rules to Live By

SCULPTURES & MOVING ART

When placing sculptural or self-standing work at home, consider a spot where it can be viewed from multiple angles to maximise it's appeal.

Pedestals, coffee tables, windowsills, side tables, sideboards and mantlepieces can all make excellent homes for sculptures big and small.

Carla Cascales Alimbau's work is a stunning example of this, incorporating natural materials like wood, rock and metal in a super contemporary, minimalist way.





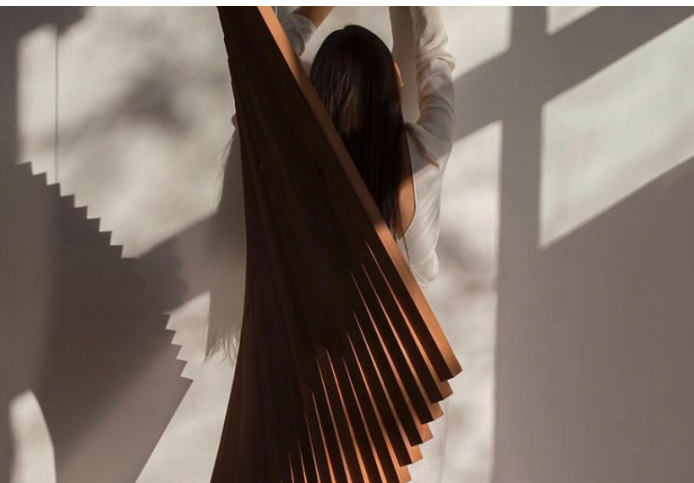
A Note On Height

EYE LEVEL IS YOUR FRIEND!

Hang a piece too high and it will awkwardly float above the room, too low and it will make the space feel cluttered. Eye-level is your friend, friends.

Art should feel like a mirror, your head level with the top half of the piece. Another way to frame it (pun not intended) is if your wall is divided horizontally into 4, art should sit within the 3rd area up from the floor. That's where the magic happens. To be more exact, the ideal height for artwork on a bare wall is for the centre of the piece to sit 145-152cm from the floor (or 15-20cm above a piece of furniture).

If you're hanging different pieces around the same room, line up the centre of each (rather than make the tops or bottoms level) and your walls will thank you.



A Note On Scale

BIGGER ISN'T NECESSARILY BETTER!

We always advocate for drama and big impact - we like our art memorable, but know that something small like a sculpture or delicate ornament can be just as impactful as a bold mural. Our clients are often faced with a chicken and egg scenario over whether to choose a *piece for a space* or a *space for a piece*.

We think if you can bear both in mind simultaneously, it will lead to the best match for your home (and avoid broken hearts if you fall in love with a 10 x 10 metre abstract painting but live in a tiny studio apartment).



A Note On Lighting

NOTHING BEATS FANTASTIC NATURAL LIGHTING..

..though **beware of too much direct sunlight** which will fade out colour over time. Good lighting enhances your artwork, ensuring it is showcased at its very best. There are many different lighting solutions from special wall-mounted picture lights, to angled spotlights from the ceiling. We can advise you on the best set-up for your piece.

How to actually hang your art

We've all been there.. painstakingly hanging a piece of art or framed print then realising it doesn't look right. Avoid peppering your walls with holes with this simple tip! Before physically hanging the artwork, take a roll of **brown paper** and draw around the piece. Use masking tape to position on the wall space and make sure you are happy with the placement.

This is especially good to do when hanging a gallery wall, to get a sense of how each object will work.



Mark the hanging points or height of the wire onto the paper, tape to the wall and hammer or drill in the right place. When hanging portraits, it also helps to note down the direction the person is looking - to avoid any strange staring mishaps.

Always know what your walls are made of before attempting to hang anything - solid concrete or stone will need a mega drill. Drywall will need some serious reinforcing before you hang a heavy 3D piece. If in doubt - bring in the big guns and let us send a trusted partner to do it for you.

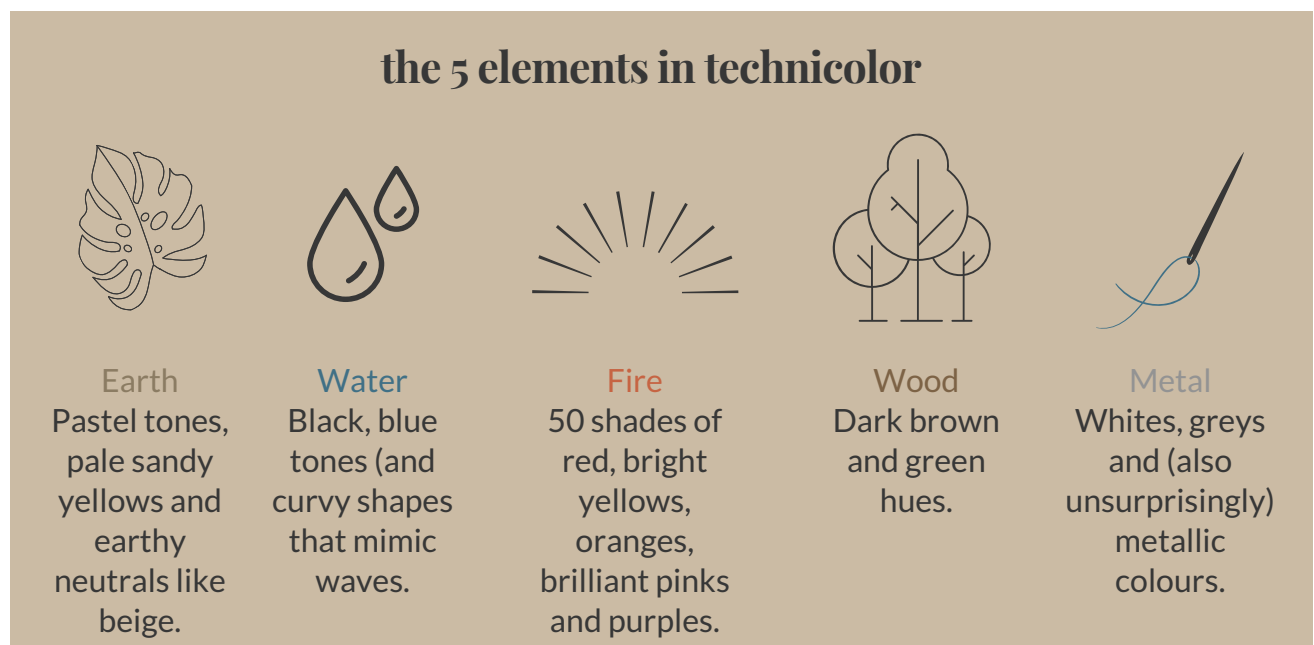
To tell if your art placement is working or not, take a picture with a smartphone from a distance. A photo can reveal more than the naked eye (especially when you've been looking at it for too long and lost all sense of right and wrong).

What even is Feng Shui?

We hear this ancient Chinese practise referred to a lot, often conjuring the image of a monochromatic space, the raked pebbles of a zen garden or a strict set of rules that can make or break "good vibes".

Feng Shui is the 3,000-year-old science of inviting positive Qi (pronounced "Chi") - invisible life energy - into a space. Put simply, the concept really just means balance. The principles are actually very accessible and provide intuitive guidelines to creating the most calming home.

For the best Feng Shui in a nutshell, incorporate the 5 key elements equally - earth, water, fire, wood and metal. In art terms, that might be through choice of colour, the themes depicted, materials used or placement.



If you want to be really meticulous, you could use the Feng Shui Bagua - a literal map depicting what elements to bring into each area depending on which direction it faces.

Ultimately, Feng Shui is all about creating a space that feels good! If you surround yourself with positivity and good things, the rest of your life can only follow suit. We like to interpret these principles loosely, in ways that best suit our tastes and personalities.

A Walkthrough Of Our Artsy Feng Shui Dream House



Hallway

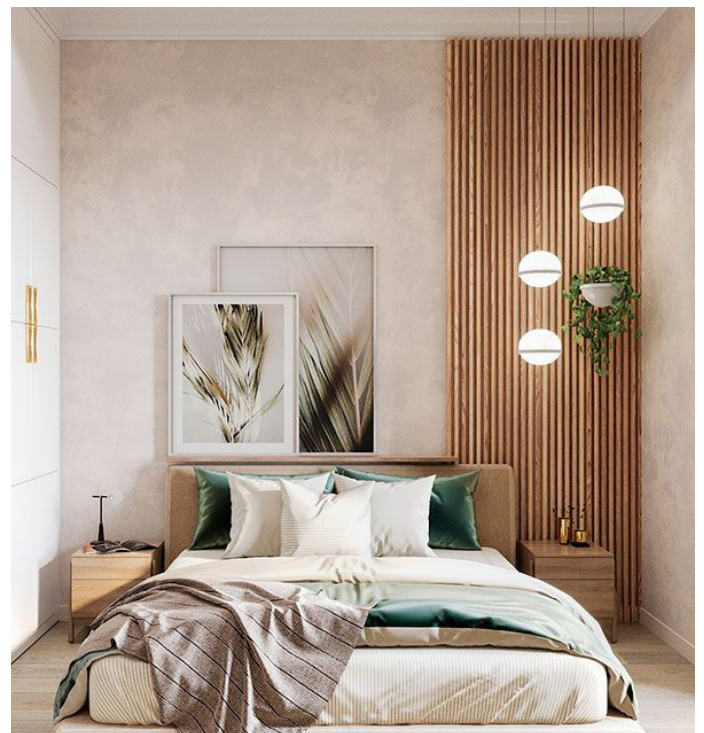
WHERE ENERGY ENTERS THE SPACE

Referred to as the “Mouth of Qi” - the hallway is your gateway to the world, and where all of the energy enters. Keep hallways light and bright and feature anything related to the water element - mirrors, glass, blue tones. All of it.

Bedroom

UNWINDING & RELAXING

As the bedroom is meant for unwinding and relaxing, avoid art with aggressive themes - especially depicting blood or violence. Soothing colours and tones work best to encourage deep sleep and either abstract paintings or artwork in pairs are ideal (to attract romance). Never put a painting of the sea above the bed. Water extinguishes fire (if you catch our drift) - **no bueno for the bedroom.**





GAG garnaartgallery

Living Room

LIGHT AND NEUTRAL COLOURS

It goes without saying that a living room calls for a show-stopping focal point - usually above the dominant feature like a beautiful sofa or fireplace. Don't forget that art isn't necessarily just a painting on canvas - stunning furniture, lighting, ornaments and objects can all bring something unique to your interior design. Typically a family space, the living room is well served by wood colours and elements. We love light and inviting neutral colours paired with a cosy, contrasting canvas in dramatic darker jewel tones.

Kitchen & Dining Room

MODERN AND TRADITION

Above counter space or cabinets are ideal spots for art in the kitchen. We love mixing old with new - like a traditional oil painting in a contemporary kitchen, or displaying artwork and even sculpture on open shelving. Avoid hanging art in a place where it might get damaged by water or heat (we learned this the hard way). In a dining room, artwork is ideally hung slightly lower, to be able to appreciate it the most while seated. Elegant triptychs look beautiful above a sideboard in a dining space and gallery walls work well inside an alcove or breakfast nook.





Bathroom

SANCTUARY AND RETREAT

The bathroom is a place for retreat and sanctuary. Nature inspired art works well here, as do plants and earthy natural materials like rattan and wood through accessories. Easy abstracts can lift and brighten any bathroom space and gorgeous nudes always work well. If you can't hang a nude in the place where you disrobe, where can you? Remember that artwork in your bathroom will be subjected to steam and heat, so ensure your artwork is professionally framed behind glass (especially for acrylic or oil paintings, which are not friends with humidity). Good ventilation will help art stand the test of time.

Home Office

WHERE CREATIVITY REIGNS

Your home office is all about creativity and success - bring in dynamic artwork for positive chi. Everything you surround yourself with should radiate positivity and inspire you - inspirational quotes, bold colours, cool vintage artwork that evokes happy memories. Some of the brightest, boldest art around is neon art. Whether it's abstract, a favourite quote or just a design you love, a well positioned neon piece can completely change the feel of an office or studio. We love the work of Fernando de Ana. Water elements such as mirrors or blue tones, and metals are considered to be amazing for a study too. One of our favourite studio spaces of all time is...



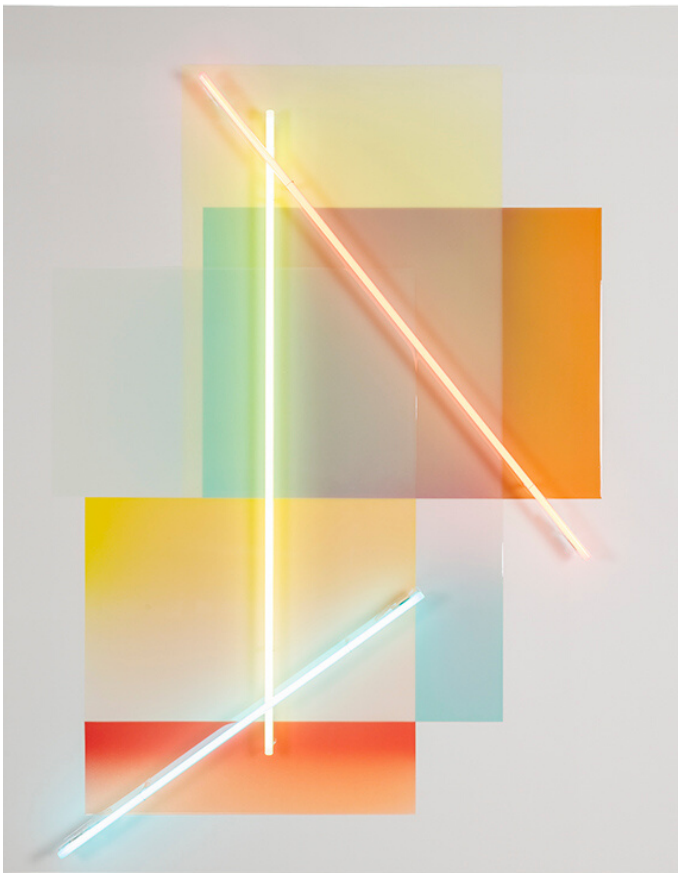


Studio Lights

CHANGE THE WAY YOU FEEL

Whether it's abstract, a favourite quote or just a design you love, a well positioned neon piece can completely change the feel of an office or studio.

We love a bit of mood-boosting neon!



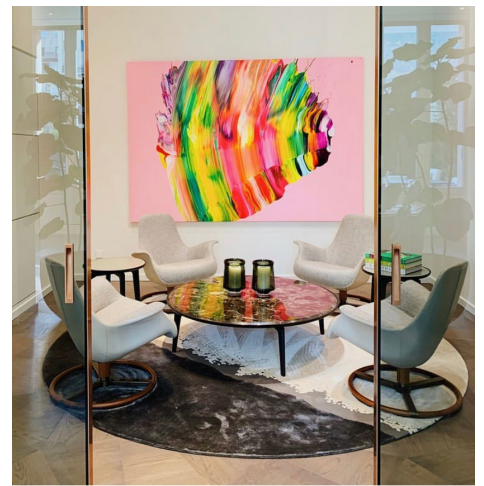
THE ART BÜRO's

DOS

&

DONT'S

DOs



1

Choose art based on the vibes you need from each room - sensuality or healing in the bedroom, inspiring and energetic in your home office.

Use your instincts when it comes to colour and placement. **Play around**, move your furniture and you will know what feels good.

2

Take your time and be patient, focus on collecting things you love - not for the sake of filling wall space.

3



DON'Ts

1

Avoid paintings or photographs depicting dark themes, which invite anxiety or sadness into your space.

2

Avoid clutter (considered to block and interrupt good energy). Don't wait until the spring to have a clear-out.

3

Consider your artwork vs empty wall space ratio - it's all about that balance.



..to conclude



have fun!

Nothing beats your gut reaction to a piece in your home - if you love it and it feels right, that's good enough for us! There are no design principles in the world that can compete with the humble gut feeling.

If something makes you feel happy - do it! At The Art Büro, we like to prioritise the pure joy of art above everything else. Keep the rules in mind, but definitely experiment and break them whenever it feels right for you!

We want to hear from you !

WE HELP YOU SOURCE EXCITING ORIGINAL ART WORKS BY CONTEMPORARY SPANISH AND CATALAN ARTISTS along with artists living in our beloved Barcelona

From the first-time art buyer to the experienced collector, our clients enjoy our individualised service and offline events including artist dinners, studio visits, art talks and pop up exhibitions.

Consultations are available online and offline in Barcelona, Costa Brava and the Empordá.

Get in touch & join our art♥affair!



Artwork Sourced From The Following Artists & Design Studios...

Anish Kapoor
Carla Cascales Alimbau
Diego Cabezas
Fernando de Ana
Kirsty Fenton
Santiago Picatoste
Viani
Yago Hortal

A.D. Spain
Jaime Beriestein Studio
LUV Studio Design
L.A. Studio Interiorismo
Gärna Art Gallery
Athena Calderone